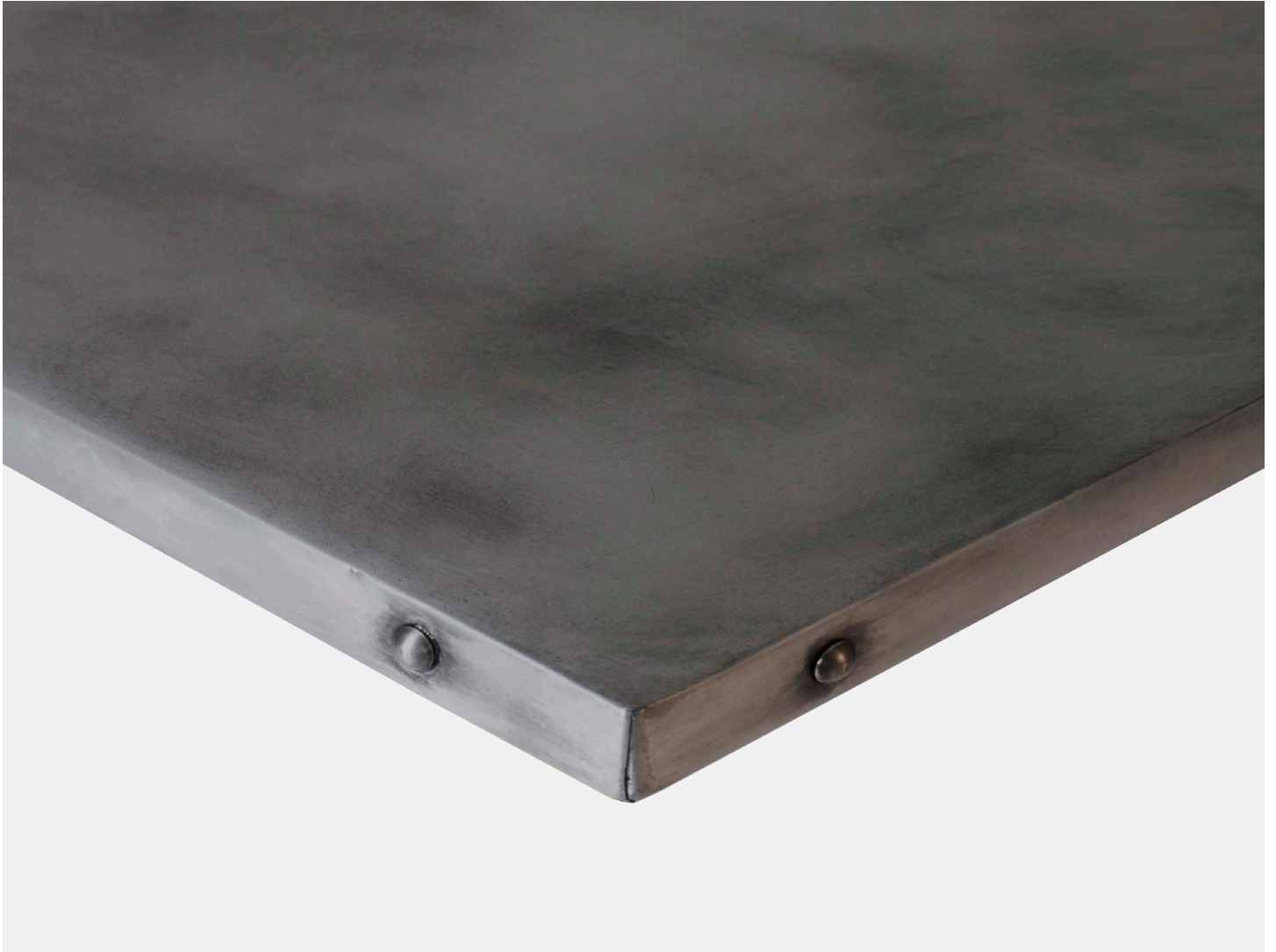


HARROWS



PATINA TABLE TOP

The Patina Table Top creates mood and texture in any cafe or restaurant fit out. Constructed from high purity zinc, the table top is available in a natural finish, or pre-aged for stunning effect.

It's all in the details with antique buttoning available for the edging also. Pair this Patina Table Top with any of our pedestal bases to create your look.

CUSTOMISABLE ELEMENTS

Size, Edge Details, Finish

SPECIFICATIONS

Material:	Zinc alloy wrapped on ply
Finish:	Natural zinc or antique finish Buttoned edges optional
Dimensions:	600 x 700, 600 x 800 700 x 700, 800 x 800 1200 x 800 Additional sizes available on request
Application:	Indoor
Warranty:	3 Year Commercial Warranty