



UNITE
SEATING SYSTEM

Harrows

CHAMPIONS OF SOCIAL SPACES [HARROWS.CO.NZ](https://harrows.co.nz)

Champions of Social Spaces.



Introducing Unite

Unite is a truly modular range of upholstered seating that is endlessly versatile. Consisting of lounges, ottomans, privacy screens and accessories, these adaptable pieces are designed to be easily reconfigured to suit any environment.

Built around a modular framework with a consistent footprint, the concept is self-supporting and can drop straight into a fitout, without the hassle of permanent fixtures or costly renovations.



Side Table and Power

The Unite Side Table is available with or without power mounted underneath the solid timber top. The power unit is an Elsafe Phase unit with 1 power, 1 USB-A and 1 USB-C.



High Back

Add screens to any standard Unite configuration to create a high-back option, adding privacy and flexibility.



A modular footprint

Each module is based on the same 750mm square footprint.

This allows each piece to fit together within the same grid including curved units that nest seamlessly back-to-back.

Sloping lines and organic curves.

Sloping lines and upholstered finish help to soften and warm any space. Being designed and made by Harrows, it means you can select or specify any commercial fabric for upholstery, and even mix and match colour blocking on pieces and panels.





Seamless stands along or fits back to back

Mix and match colour blocking



Key Features

- 01
NZ designed and manufactured
- 02
Accessories available
- 03
Upholstered in fabric of choice
- 04
Modular design
- 05
Wisewool needle-punched blanketing

Unite



Unite is a unique modular seating system consisting of lounges, ottomans, privacy screens and accessories. The modular aspect of the design allows the user to make an impact visually while still maximising the functionality and flexibility of their space.

Made from	Upholstery over foam on timber frame Includes Wisewool needle-punched blanketing
Finishes	Upholstered in any fabric Timber accessories stained in any colour
Dimensions	750 x 750 - Seat 450h Internal or External Curves at 25°/30°/45° Lounge 800h Privacy Screens 1200h Side Tables 320 round See Product Brochure for more sizes
Application	Indoor use
Warranty	10 year commercial warranty
Lead time	Made to order - 6 to 8 weeks
Origin	New Zealand
Designer	Harrows
Certification	Global GreenTagCert™ GreenRate Level C GreenTagPHD™ PlatinumHEALTH™ & HealthRATE™ Declaration™

Straight Sections



Ottoman

450h
750 × 750



Lounge

800h / seat 450h
750 × 750



Highback

1200h / seat 450h
750 × 750

90° Corner Sections



90° Ext Ottoman

450h
750 Radius



90° Ext Lounge

800h / seat 450h
750 Radius



90° Int Ottoman

450h
750 Radius



90° Int Lounge

800h / seat 450h
750 Radius



90° Int Highback

1200h / seat 450h
750 Radius

45° Curved Sections



45° Ext Ottoman

450h
750 Inside Radius



45° Ext Lounge

800h / seat 450h
750 Inside Radius



45° Ext Highback

1200h / seat 450h
750 Inside Radius



45° Int Ottoman

450h
750 Inside Radius



45° Int Lounge

800h / seat 450h
750 Inside Radius



45° Int Highback

1200h / seat 450h
750 Inside Radius

30° Curved Sections



30° Ext Ottoman

450h
1500 Inside Radius



30° Ext Lounge

800h / seat 450h
1500 Inside Radius



30° Ext Highback

1200h / seat 450h
1500 Inside Radius



30° Int Ottoman

450h
1500 Inside Radius



30° Int Lounge

800h / seat 450h
1500 Inside Radius



30° Int Highback

1200h / seat 450h
1500 Inside Radius

Accessories



Side Table

320Ø 650h



Side Table with Power

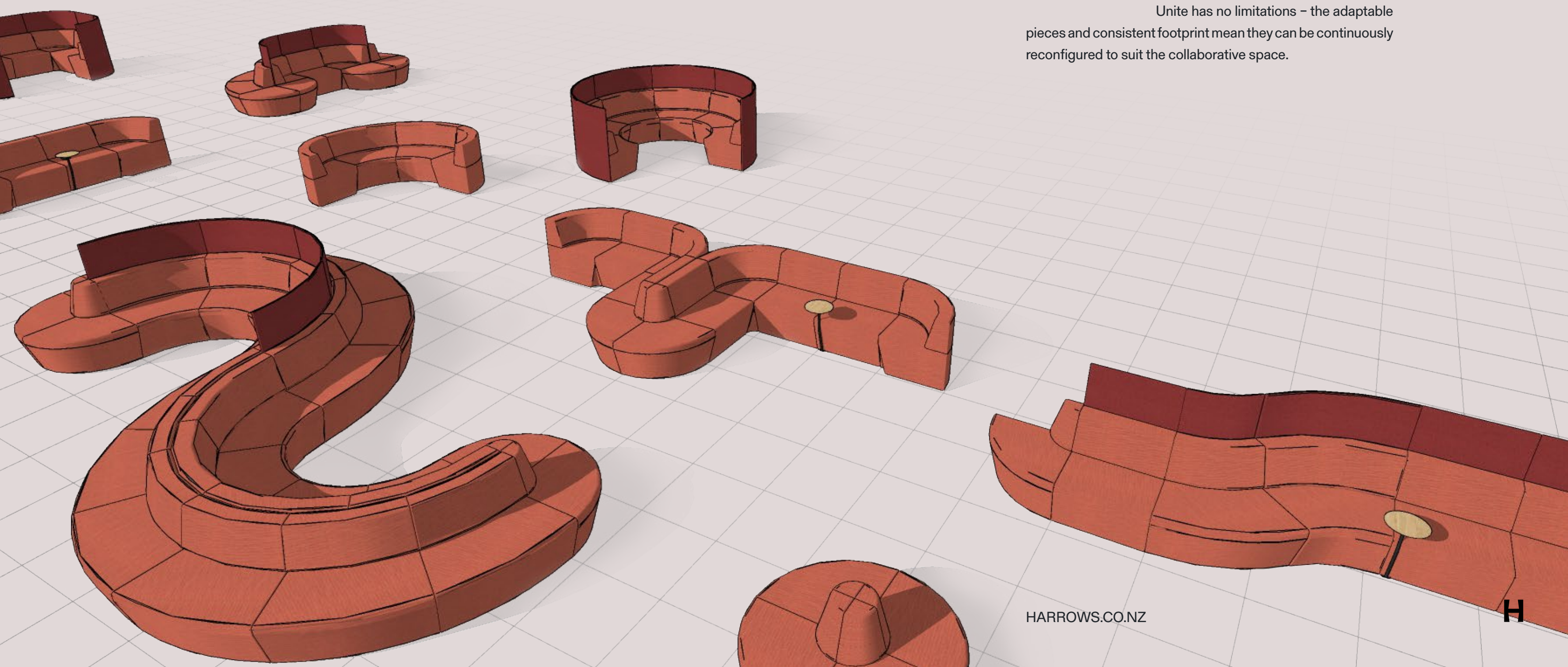
320Ø 650h

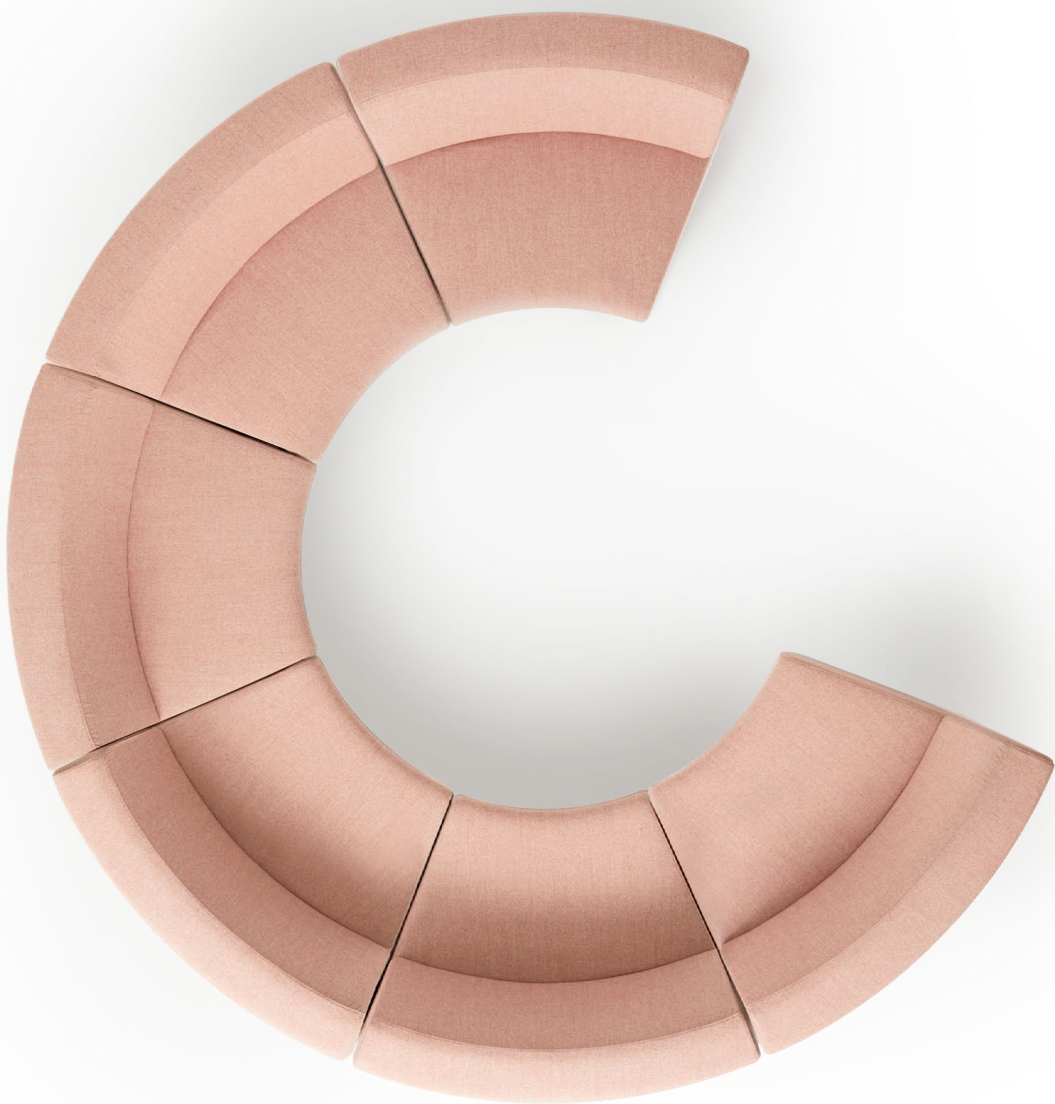


No limitations.

The modular aspect of the design allows the user to make an impact visually while still maximising the functionality and flexibility of their space.

Unite has no limitations – the adaptable pieces and consistent footprint mean they can be continuously reconfigured to suit the collaborative space.





Co-ordinated
pieces to
create unique
configurations.

Made for life.

At Harrows we believe in responsible manufacturing. Latest technology and time-honoured craft go hand in hand to create products that bring people together and are designed with longevity in mind, extending the useful life and in turn reducing waste.

Global GreenTagCert™

Unite Seating range carries GreenRate™ Level C certification and PlatinumHEALTH™ HealthRATE™ certifications under the Global GreenTag International Product Health Declaration™ (GreenTag PHD™) program.

In the Green Star® NZ program Level C carries 50% of the credit points. The GreenTag PHD is recognised by WELL™ and LEED®. A copy of each GreenRate certificate can be downloaded from product resource section.

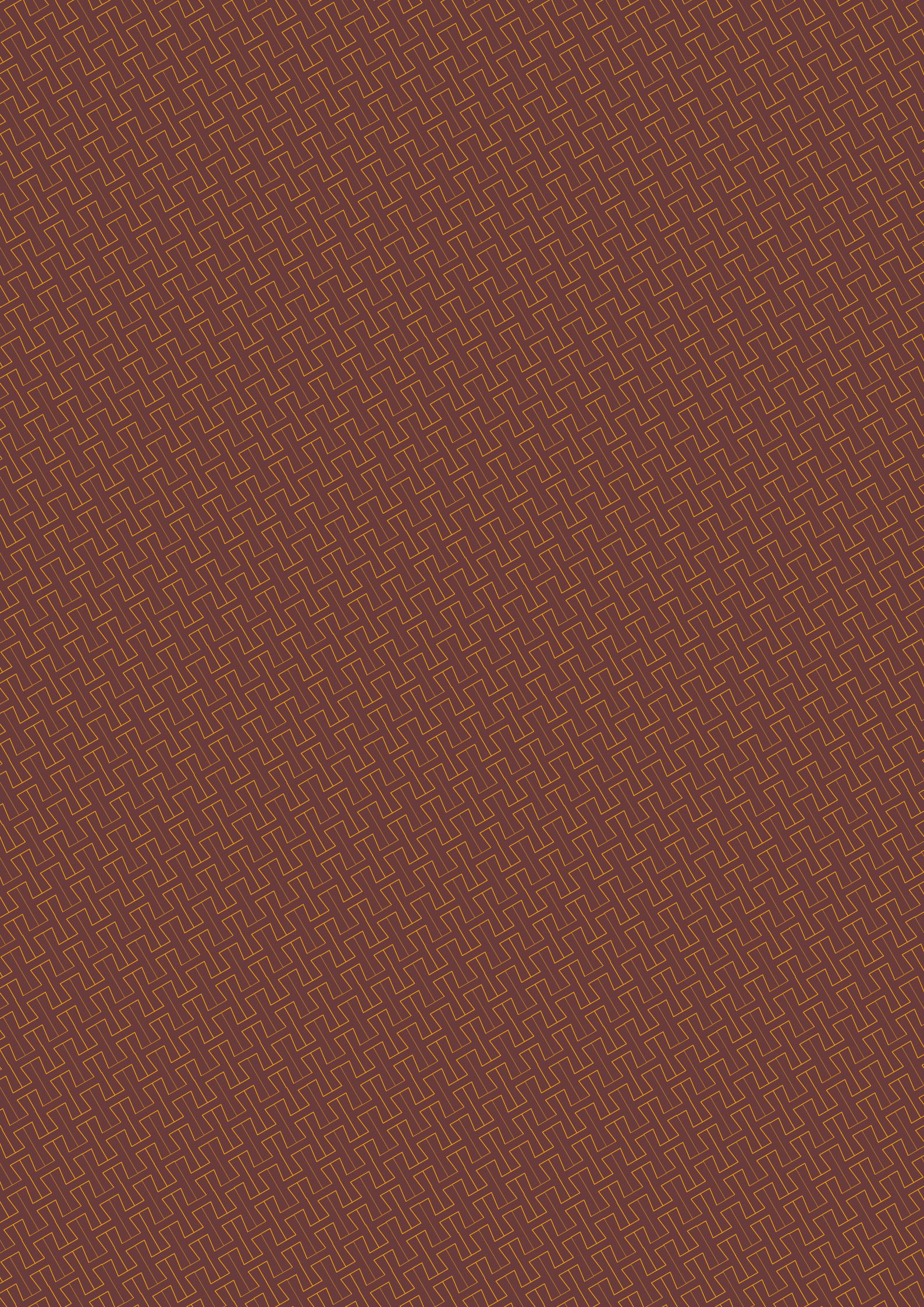




Made personal.

We are real people, backing it up with real skills. Thoughtfully crafted designs made here in NZ by family-owned third generation furniture makers. Our workshop is a bustling hub of creativity and expertise. Inhouse teams for everything – laminating, machining, engineering, fitting, assembly, powder coating, polishing, painting, and upholstery.

It's where the magic happens, where each piece comes to life with skill, craftsmanship and a finish that's uniquely yours.



Life is built on the interaction of people. We fill spaces with thoughtfully crafted furniture to facilitate these interactions.

Let's talk.

0800 142 233
SALES@HARROWS.CO.NZ

AUCKLAND
ORANGE CORONATION HALL
147 NEWTON ROAD — EDEN TERRACE
AUCKLAND — NEW ZEALAND

TIMARU
31 - 33 REDRUTH STREET
TIMARU — NEW ZEALAND

SALES@HARROWS.COM.AU

MELBOURNE
GROUND FLOOR — 50 QUEEN STREET
MELBOURNE CBD — VICTORIA

