

Revive. HARROWS

MADE FOR SOCIAL SPACES



Revive.

A minimal take on classic mid-century design.

The Revive chair features a refined solid Ash frame and invitingly soft upholstery in a timeless look that will be at home in both modern and traditional spaces.

Designed and manufactured in New Zealand from sustainably grown timber using traditional techniques, the Revive chair can be stained in any colour and upholstered in any fabric to personalise your space. Cushions have loose filled toppers over multi-density foam and are supported on a webbed base for luxurious comfort.

Origin:	Designed and manufactured by Harrows in New Zealand.
Made from:	Solid American Ash frame with webbed upholstered seat for maximum comfort
Finish:	Frame stained in colour of choice.
Options:	Upholstered seat in any commercial fabric, vinyl or leather. Requires 3.0m of fabric.
Application:	Indoor use.
Guaranteed:	5 year commercial warranty.





750h x 755w x 890d - Seat height 430h - Arms 530h

HARROWS

New Zealand Made.

Designed and manufactured in New Zealand by Harrows, the Verde collection can be upholstered and finished to suit any interior.

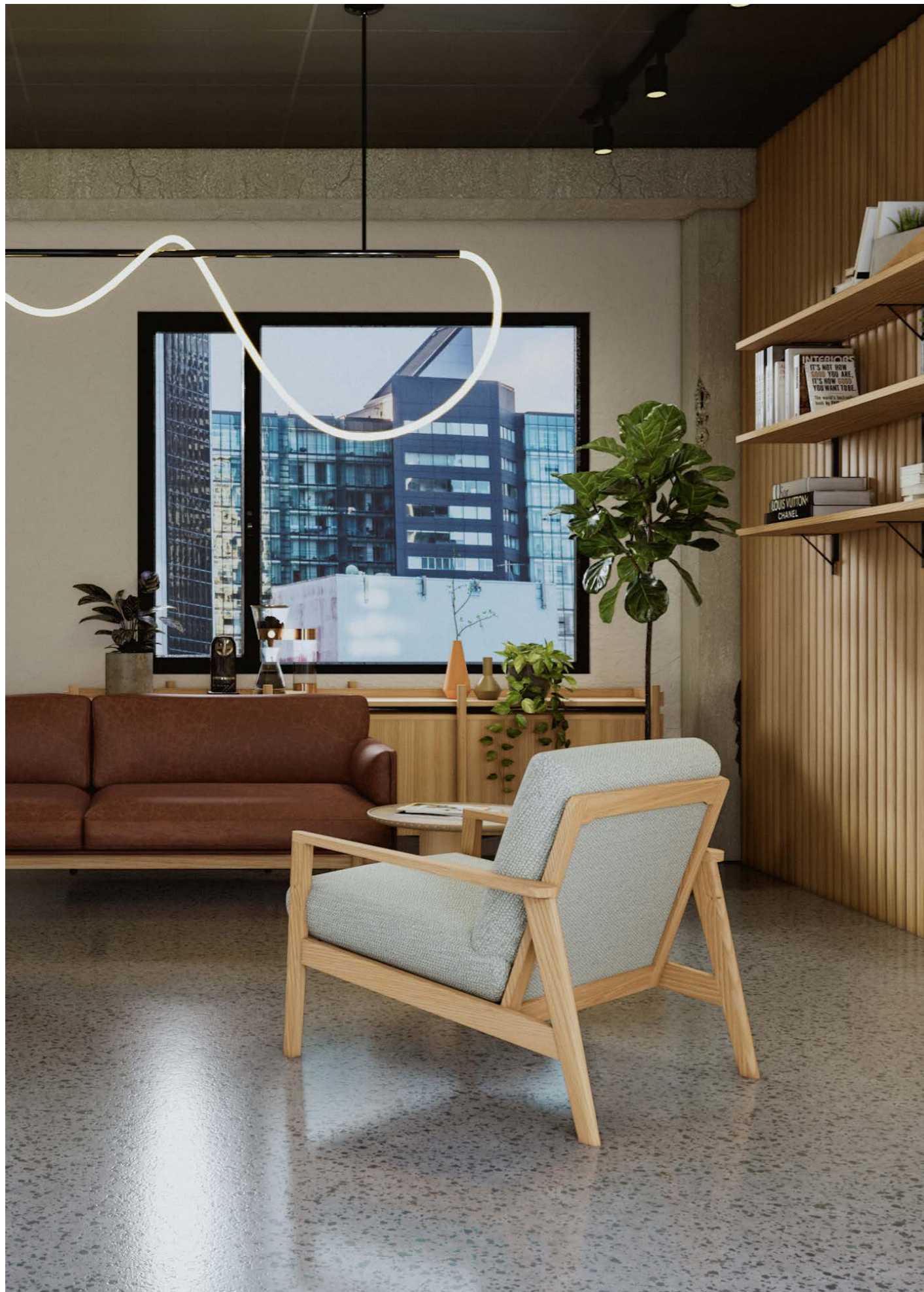
Choose from one of our 12 stain colours to contrast or compliment the solid timber base against your choice of upholstery material.

Timber Stain Colour Options.

Colours are indicative only.



MADE FOR SOCIAL SPACES



HARROWS

Revive + Sustainability.

Sustainable Design.

When the objects around us are inclined to lose value, Harrows have set out to create beautiful and sustainable products that add value to their environment for years to come. Products with social relevance and timeless design principals, made from quality materials and built to last.

Bio-based Focus.

Revive, like majority of the Harrows collection, has been constructed from bio-based materials where possible. We focus on making sustainable choices and looking for sustainable alternatives. The timber used in our manufacturing is sourced from certified responsibly managed forests.

New Zealand Made.

Revive is produced in our own factory in Timaru from locally manufactured components, minimising both international and local freight volumes. Manufacturing inhouse also gives us full control and transparency over the quality and origin of all materials.

Made
for life.



MADE FOR SOCIAL SPACES

