



TRIO COLLECTION

Harrows

CRAFTED FOR CONNECTION

HARROWS.CO.NZ

Crafted for
connection.



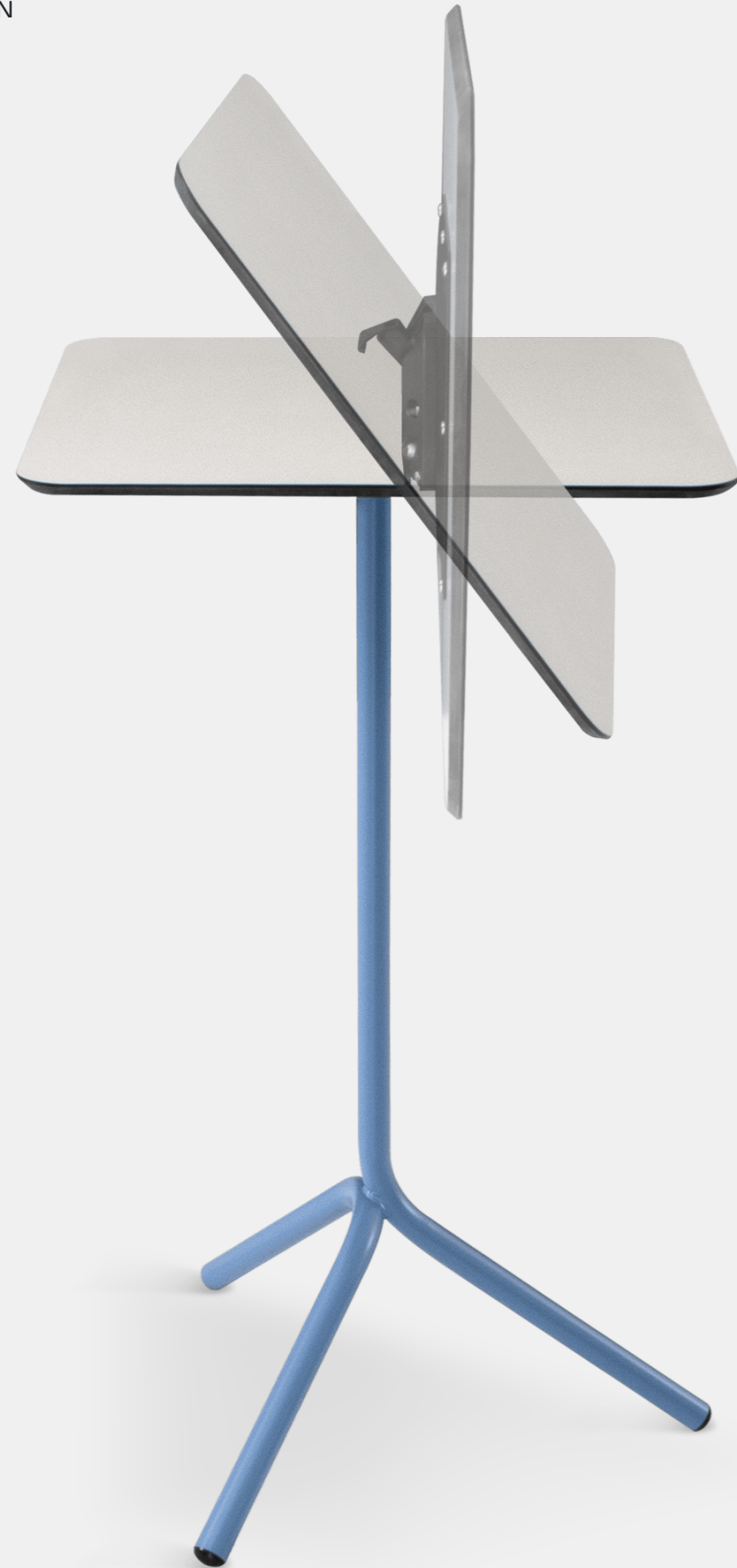
Introducing Trio

Trio is minimalist in design and maximal in performance. The curved steel tube construction avoids unnecessary embellishments, focusing on clean lines and aesthetically pleasing curves.

The base's stability comes from the triangular geometry, allowing it to and, combined with the folding mechanism, allows these tables to be stacked.







**Minimalist
in design and
maximal in
performance.**

Folding

The Trio flip-top mechanism is designed for one-handed operation, the bracket allows the top to fold smoothly and securely, enhancing flexibility.



Stacking

Trio's leg design ensures effortless storage by enabling close stacking, making it easy to maximize space.

Exceptional Durability

The Trio table top is resistant to wear, stains, moisture, and impact. Its antimicrobial properties ensure a hygienic and reliable surface for any setting.



Leaner + Table

Trio offers versatility with height options of 750mm for a table or 1050mm for a leaner.



- 01

Key Features

- 01 Stacking design with compact footprint
- 02 Powder coat any colour
- 03 Three-leg design for stability on uneven surfaces
- 04 Table or Leaner height with multiple table top sizes
- 05 Compact Laminate Top with a 75° undercut with 30mm radius on corners



- 02, 03



- 04



- 05



Key Features

- 01
Flip top bracket for folding top
- 02
Base designed to allow stacking
- 03
Zinc coated steel for outdoor application
- 04
Harrows design

Trio



Trio is a table minimalist in design and maximal in performance. The curved steel tube construction avoids unnecessary embellishments, focusing on clean lines and aesthetically pleasing curves. The base's stability comes from the triangular geometry, allowing it to and, combined with the folding mechanism, allows these tables to be stacked.

| | |
|---------------------|--|
| <u>Made from</u> | Zinc coated steel base with Compact Laminate Top |
| <u>Finishes</u> | Powder coated any standard colour Compact Laminate tops available in Battalion, Oyster Grey, Polar White, Sublime Teak and Licorice Linea |
| <u>Sizes</u> | 600/700/800 round x 750H 600x600/700x700 x 750H |
| <u>Edge Profile</u> | 75° undercut with 30mm radius on corners as standard |
| <u>Application</u> | Indoor or outdoor use |
| <u>Warranty</u> | 5 year commercial warranty |
| <u>Lead time</u> | Finished to order - 6 to 8 weeks |
| <u>Origin</u> | New Zealand |
| <u>Designer</u> | Harrows |



Key Features

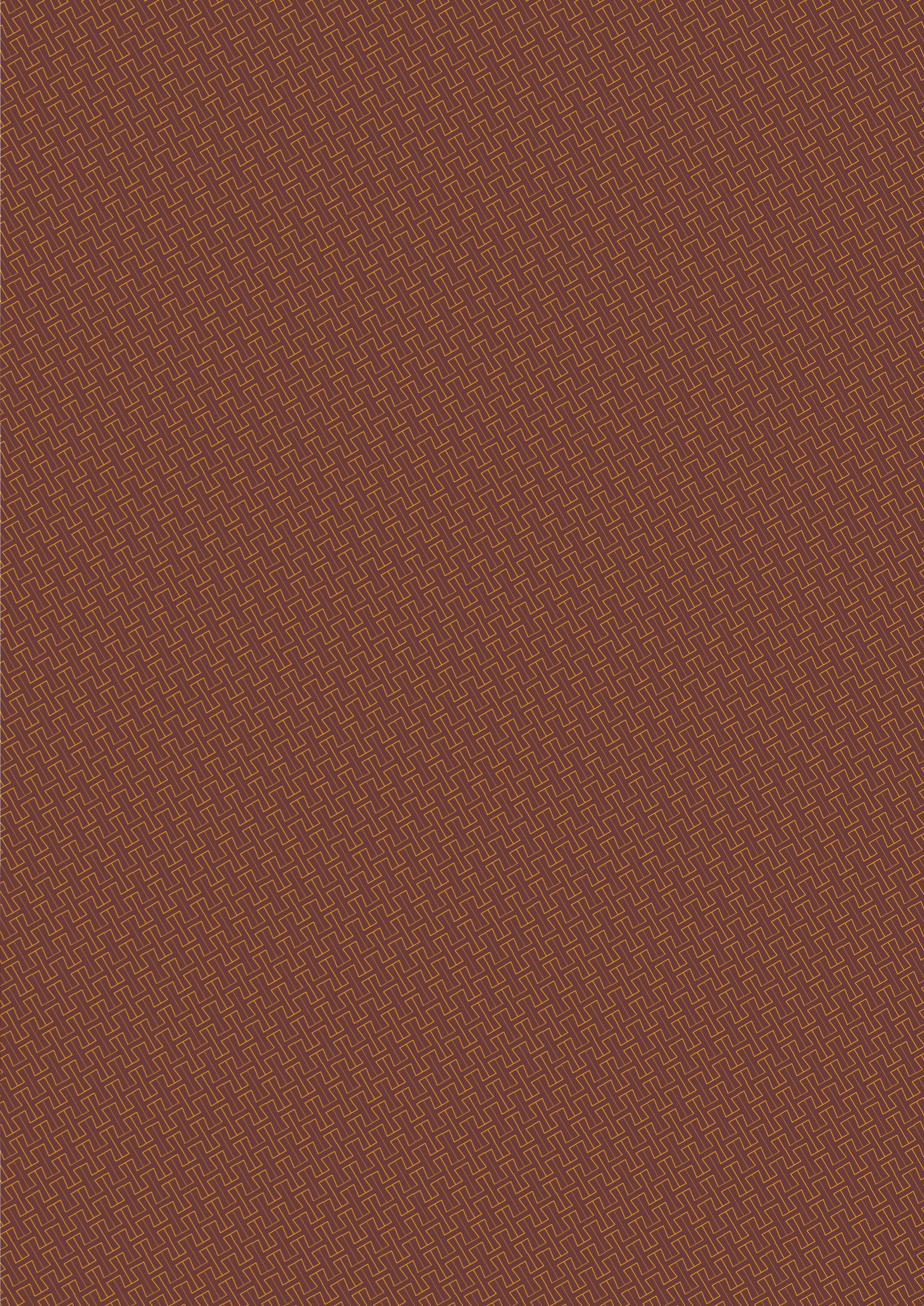
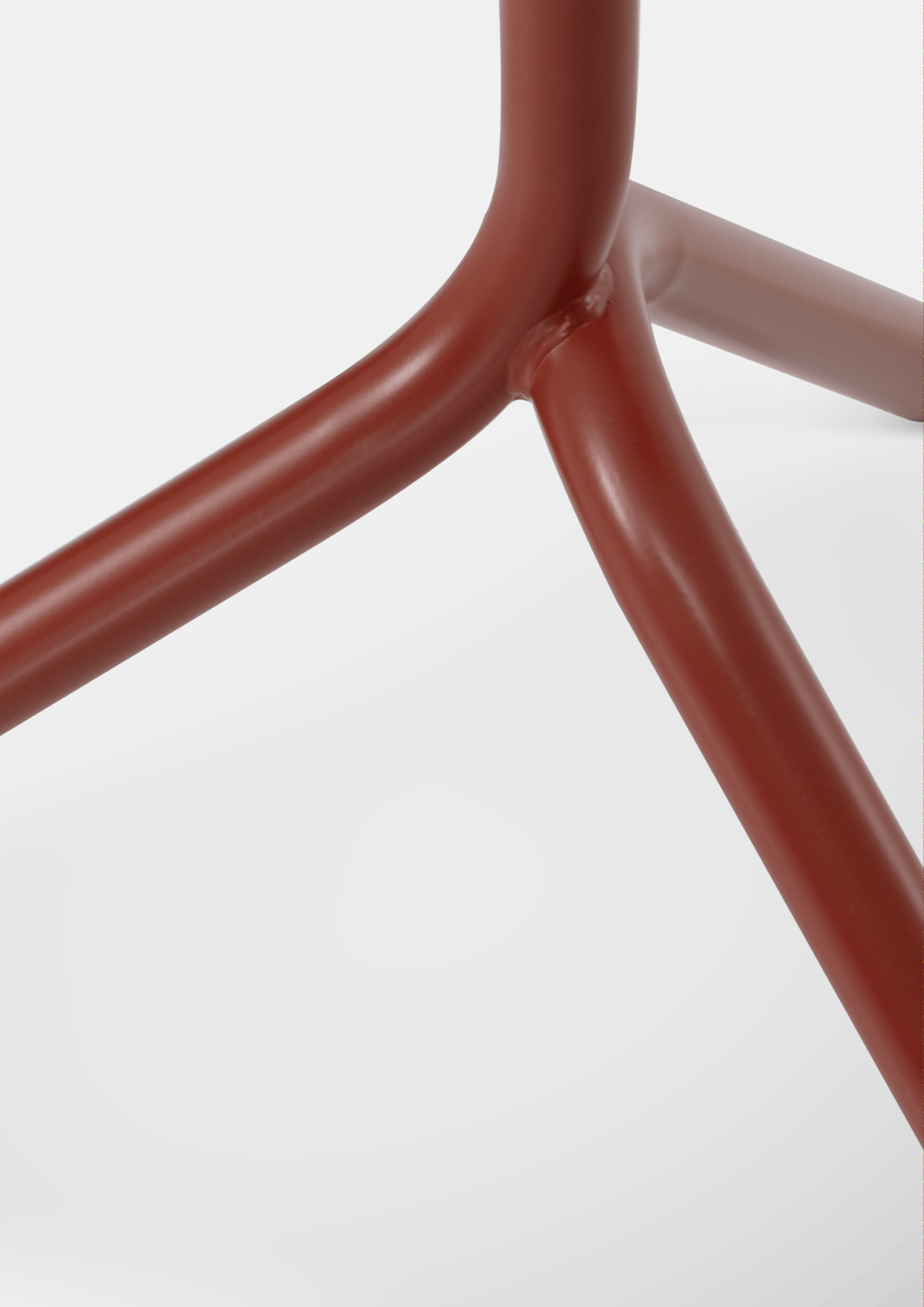
- 01
Flip top bracket for folding top
- 02
Base designed to allow stacking
- 03
Zinc coated steel for outdoor application
- 04
Harrows design

Trio



Trio is minimalist in design and maximal in performance. The curved steel tube construction avoids unnecessary embellishments, focusing on clean lines and aesthetically pleasing curves. The base's stability comes from the triangular geometry, allowing it to stand, combined with the folding mechanism, allows these tables to be stacked.

| | |
|---------------------|---|
| <u>Made from</u> | Zinc coated steel base with Compact Laminate Top |
| <u>Finishes</u> | Powder coated any standard colour Compact Laminate tops available Battalion, Oyster Grey, Polar White, Sublime Teak and Licorice Linea |
| <u>Sizes</u> | 600/700 round x 1050H 600x600 x 1050H |
| <u>Edge Profile</u> | 75° undercut with 30mm radius on corners as standard |
| <u>Application</u> | Indoor or outdoor use |
| <u>Warranty</u> | 5 year commercial warranty |
| <u>Lead time</u> | Finished to order - 6 to 8 weeks |
| <u>Origin</u> | New Zealand |
| <u>Designer</u> | Harrows |



Life is built on the interaction of people. We fill spaces with thoughtfully crafted furniture to facilitate these interactions.

Let's talk.

0800 142 233
SALES@HARROWS.CO.NZ

AUCKLAND EXPERIENCE CENTRE
ORANGE CORONATION HALL
GROUND FLOOR 147 NEWTON ROAD
EDEN TERRACE – AUCKLAND

HEAD OFFICE & MFG.
31 - 33 REDRUTH STREET
PO BOX 3023 – TIMARU

